



#YourGearUpgraded

IN-WALL CABLE ROUTING KIT

Model **EGAV-CMIWG1**
OWNERS GUIDE

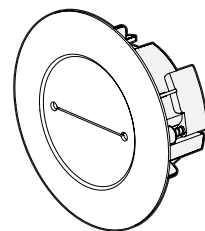
"Wanna show off your hard work?

Share a picture of your completed project with **#YourGearUpgraded**.

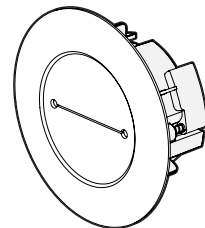
Who knows, it might not be as bad as you thought"

Confuzzled? **Contact the ECHOGEAR Pros:**

1-855-428-2490 helpmehelpyou@ECHOGEAR.com



1022060 06/18



IMPORTANT SAFETY INSTRUCTIONS

PLEASE READ ENTIRE MANUAL PRIOR TO USE - SAVE THESE INSTRUCTIONS

YEA, THE BORING STUFF ... *but read it, so you don't jack things up!*

"apologies, to all the Jacks in the world"

⚠ CAUTION: Avoid potential personal injuries and property damage!

- **For low voltage cabling only (HDMI, audio, coax or data cabling), DO NOT run power cords in-wall.**
- Please read through these instructions completely to be sure you're comfortable with this easy install process.
- Do not use this product for any purpose not explicitly specified by manufacturer.
- Manufacturer is not responsible for damage or injury caused by incorrect assembly or use.
- If you do not understand these instructions or have doubts about the safety of the installation, assembly or use of this product, contact The Echogear Pros at www.echogear.com.

WHAT'S IN THE BOX

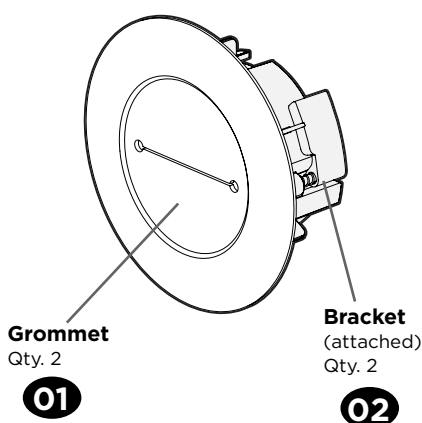
⚠ WARNING:

DON'T FEED TO CHILDREN!

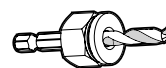
This product contains small items that could be a choking hazard if swallowed.

Before starting assembly, verify all parts are included and undamaged. If any parts are missing or damaged, do not return the damaged item to your dealer; contact Customer Service.

Never use damaged parts!

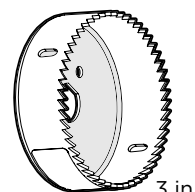


TOY SURPRISE Inside Every Box



Driver Bit
(hole saw)

03



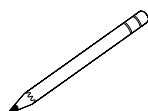
Hole Saw

04

GRAB YOUR TOOLS



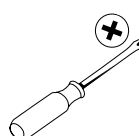
Tape Measure



Pencil



Electric Drill



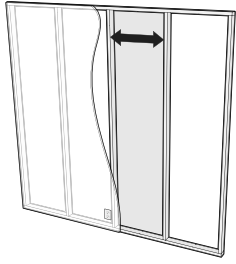
Phillips Screwdriver

"Phil wants his tools back"



Paint (optional)
Surfaces are paintable to match your decor

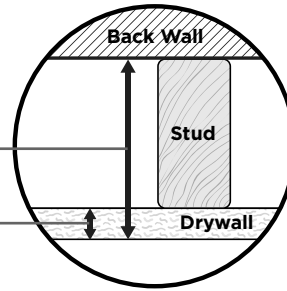
! VERIFY WALL COMPATIBILITY



This Cable Kit is designed to fit into both interior and exterior walls constructed with:

! **Minimum Space into Wall:** 3 in.

! **Minimum Drywall Thickness:** 1/2 in.

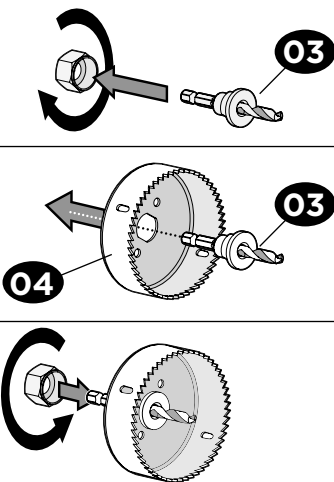


NOTE: Walls with blown-in type insulation may require removal of some insulation inside the cavity.

STEP 1

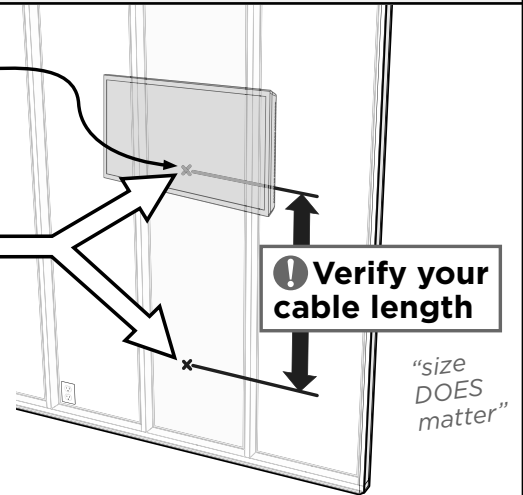
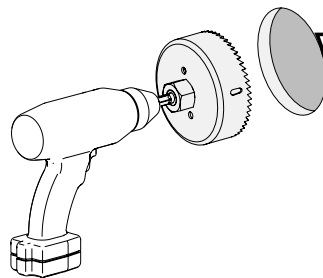
MAKE SOME HOLES

A Assemble Hole Saw



B Drill Holes

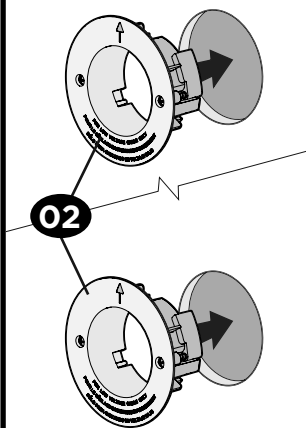
TIP: Drill the top hole **BEHIND** your TV and the bottom hole **BEHIND** your entertainment components.



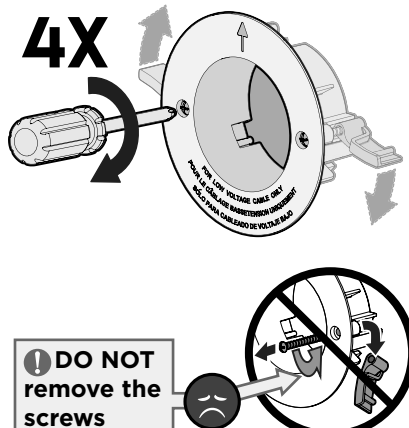
STEP 2

ASSEMBLE

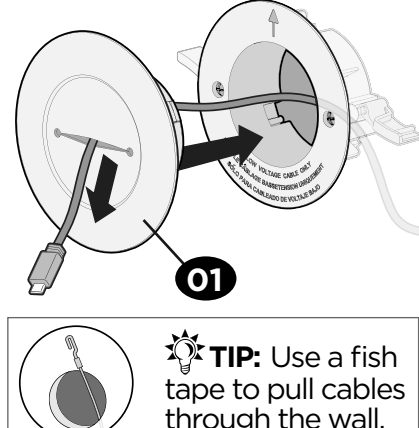
A Insert Brackets



B Lock Brackets



C Route Cable(s)



D Power Up



Milestone AV Technologies and its affiliated corporations and subsidiaries (collectively, "Milestone"), intend to make this manual accurate and complete. However, Milestone makes no claim that the information contained herein covers all details, conditions, or variations. Nor does it provide for every possible contingency in connection with the installation or use of this product. The information contained in this document is subject to change without notice or obligation of any kind. Milestone makes no representation of warranty, expressed or implied, regarding the information contained herein. Milestone assumes no responsibility for accuracy, completeness or sufficiency of the information contained in this document.

©2018 Milestone AV Technologies. All rights reserved. ECHOGear is a Milestone brand. ECHOGear and the ECHOGear logo are trademarks of Milestone.