



CUTTING TEMPLATE

ECHOGEAR

#YourGearUpgraded

IN-WALL TV POWER KIT

Model **EGAV-CMIWP2**

Installation Instructions

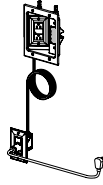
Confuzzled?

Contact the ECHOGEAR Pros:

1-855-428-2490

helpmehelpyou@ECHOGEAR.com

Doc. #1412818 11/19 Rev A



GRAB YOUR TOOLS



Tape Measure



Pencil



Stud Finder



Level

FREE

TOY
SURPRISE
Inside Every Box



Phillips
Screwdriver



Slotted
Screwdriver



Drywall
Saw

IMPORTANT SAFETY INSTRUCTIONS

PLEASE READ ENTIRE MANUAL PRIOR TO USE - SAVE THESE INSTRUCTIONS

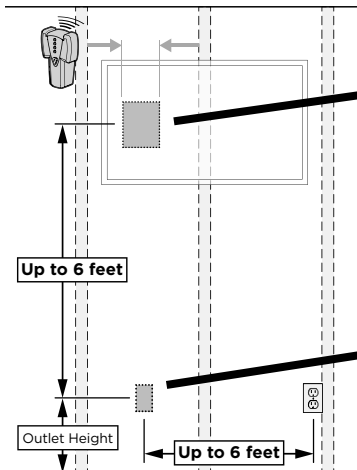
YEA, THE BORING STUFF ... but read it, so you don't jack things up! *"apologies, to all the jacks in the world"*

Legrand electrical products conform to and should be properly grounded in compliance with requirements of the current National Electrical Code or codes administered by local authorities. All electrical products may present a possible electric shock or fire hazard if improperly installed or used. Legrand electrical products may bear the mark of a Nationally Recognized Testing Laboratory and should be installed in conformance with current local and/or the National Electrical Code.

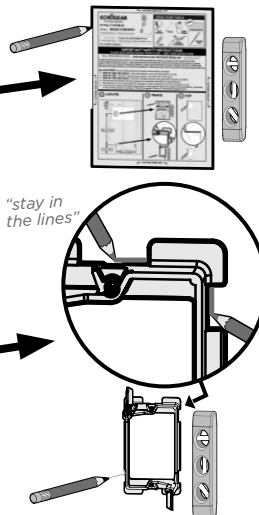
⚠ CAUTION: Avoid potential personal injuries and property damage!

- **RISK OF FIRE AND SHOCK** - Only intended for use on 15 amp branch circuits.
- **RISK OF FIRE** - DO NOT install power supply cord within the wall cavity.
- **RISK OF FIRE AND SHOCK** - DO NOT connect this box with any other circuits or outlets.
- Do not use this product for any purpose not explicitly specified by manufacturer.
- Manufacturer is not responsible for damage or injury caused by incorrect assembly or use.
- If you do not understand these instructions or have doubts about the safety of the installation, assembly or use of this product, contact The Echogear Pros at 855-428-2490 or www.echogear.com.

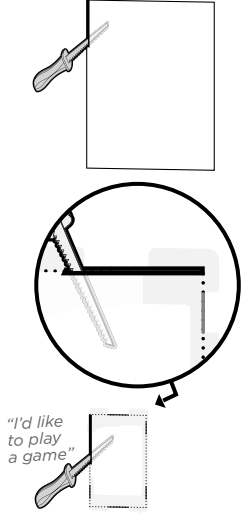
1 FIND THAT SWEET SPOT



2 TRACE



3 CUT IT OUT



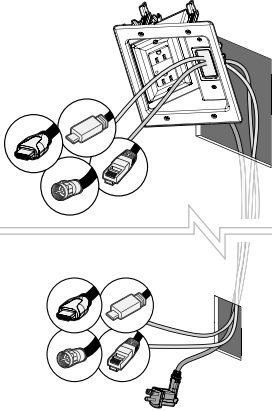
CUTTING TEMPLATE



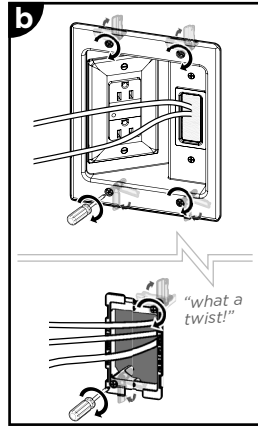
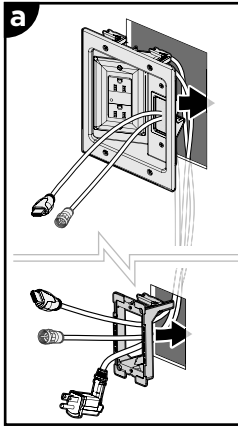


CUTTING TEMPLATE

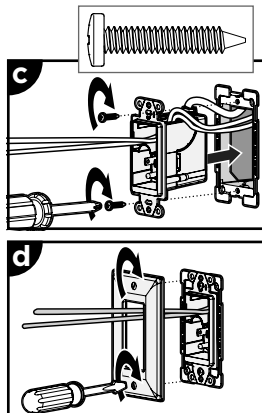
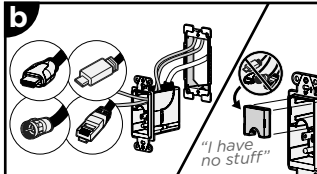
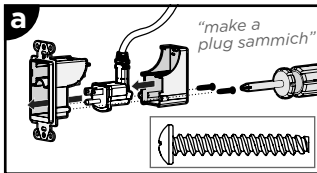
4 RUN POWER CORD (and ANY A/V CABLES)



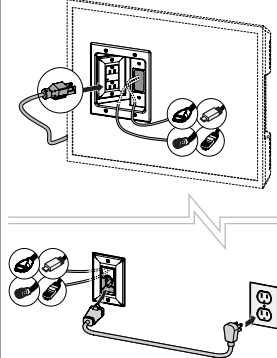
5 LOCK IT UP



6 ASSEMBLLLLLLLLLE



7 POWER UP



Legrand AV Inc.
6436 City West Parkway
Eden Prairie, MN 55344 USA
P: 1-855-428-2490
helpmehelpyou@ECHOGEAR.com
ECHOGEAR.com

Legrand AV Netherlands B.V.
Franklinstraat 14 6003 DK Weert, Netherlands
P: +44 (0) 800 0568188
helpme@ECHOGEAR.com
ECHOGEAR.com

Legrand Australia
Unit 20 / 33 Meakin Road
Meadowbrook QLD 4131, Australia
P: +61 (0) 7 3299 7000
ECHOGEAR.com

Legrand AV Inc. and its affiliated corporations and subsidiaries (collectively, "Legrand"), intend to make this manual accurate and complete. However, Legrand makes no claim that the information contained herein covers all details, conditions, or variations. Nor does it provide for every possible contingency in connection with the installation or use of this product. The information contained in this document is subject to change without notice or obligation of any kind. Legrand makes no representation of warranty, expressed or implied, regarding the information contained herein. Legrand assumes no responsibility for accuracy, completeness or sufficiency of the information contained in this document.

©2019 Legrand AV Inc. All Rights Reserved. ECHOGEAR is a Legrand AV Inc. brand and a registered trademark owned by Legrand. Made in China.

Legrand AV Inc. • 6436 City West Parkway • Eden Prairie, MN 55344 USA

Doc. #1412818 11/19 Rev A

CUTTING TEMPLATE

