

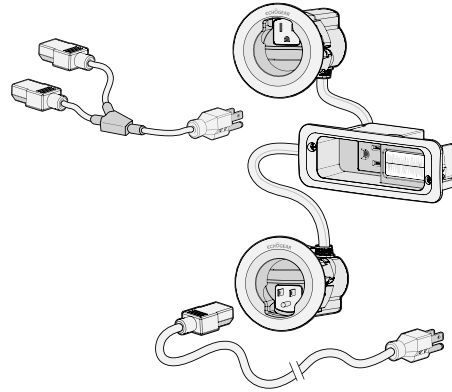
# ECHOGEAR

#YourGearUpgraded

## IN-WALL SOUNDBAR POWER + CABLE MANAGEMENT KIT

Model **EGAV-CMIWSB**  
OWNERS GUIDE

"Wanna show off your hard work?  
Share a picture of your completed  
project with **#YourGearUpgraded**.  
Who knows, it might not be  
as bad as you thought"



Confuzzled? Call the ECHOGEAR Pros:

1-855-428-2490

helpmehelpyou@ECHOGEAR.com

### IMPORTANT SAFETY INSTRUCTIONS

PLEASE READ ENTIRE MANUAL PRIOR TO USE - SAVE THESE INSTRUCTIONS

**YEA, THE BORING STUFF ... but read it, so you don't jack things up!**

**CAUTION:** Avoid potential personal injuries and property damage!

- Please read through these instructions completely to be sure you're comfortable with this easy install process.
- Do not use this product for any purpose not explicitly specified by manufacturer.
- Manufacturer is not responsible for damage or injury caused by incorrect assembly or use.
- If you do not understand these instructions or have doubts about the safety of the installation, assembly or use of this product, contact The Echogear Pros at [www.echogear.com](http://www.echogear.com).

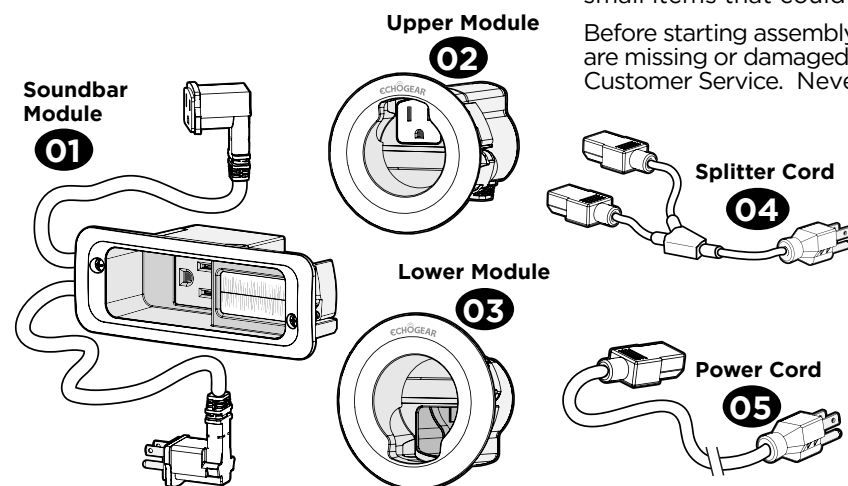
**WARNING:** RISK OF FIRE AND SHOCK. Do not connect the modules **01** or **02** to any other circuits or outlets.

**CAUTION:** RISK OF FIRE AND SHOCK. ONLY intended for use on 15 ampere branch circuits.  
Do not install power supply cord **03** within wall cavity.

This product conforms to and should be properly grounded in compliance with requirements of the current National Electrical Code or codes administered by local authorities.

All electrical products may present a possible shock or fire hazard if improperly installed or used. This product may bear the mark of a Nationally Recognized Testing Laboratory and should be installed in conformance with current local and/or the National Electrical Code.

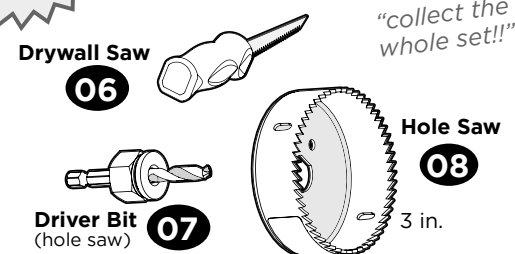
### WHAT'S IN THE BOX



**WARNING:** DON'T FEED TO CHILDREN — This product contains small items that could be a choking hazard if swallowed.

Before starting assembly, verify all parts are included and undamaged. If any parts are missing or damaged, do not return the damaged item to your dealer; contact Customer Service. Never use damaged parts!

**FREE TOY SURPRISE**  
Inside Every Box



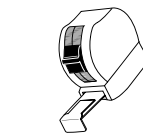
Milestone AV Technologies and its affiliated corporations and subsidiaries (collectively, "Milestone"), intend to make this manual accurate and complete. However, Milestone makes no claim that the information contained herein covers all details, conditions, or variations. Nor does it provide for every possible contingency in connection with the installation or use of this product. The information contained in this document is subject to change without notice or obligation of any kind. Milestone makes no representation of warranty, expressed or implied, regarding the information contained herein. Milestone assumes no responsibility for accuracy, completeness or sufficiency of the information contained in this document.

©2018 Milestone AV Technologies. All rights reserved. ECHOGEAR is a Milestone brand. ECHOGEAR and the ECHOGEAR logo are trademarks of Milestone.

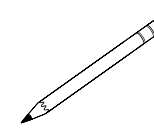
Milestone Global Headquarters 6436 City West Parkway; Eden Prairie, MN 55344 USA

1022089 06/18

### GRAB YOUR TOOLS



Tape Measure



Pencil



Electric Drill

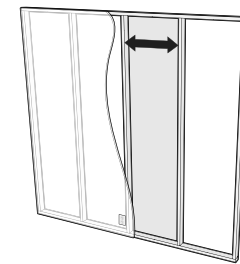


Phillips Screwdriver



**Paint (optional)**  
Surfaces are paintable  
to match your decor

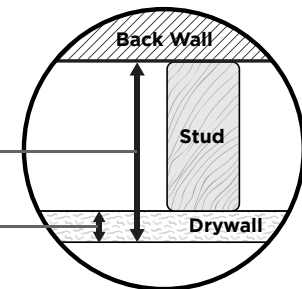
### VERIFY WALL COMPATIBILITY



This Cable Kit is designed to fit into both interior and exterior walls constructed with:

**Minimum Space into Wall:** 3 in.

**Minimum Drywall Thickness:** 1/2 in.



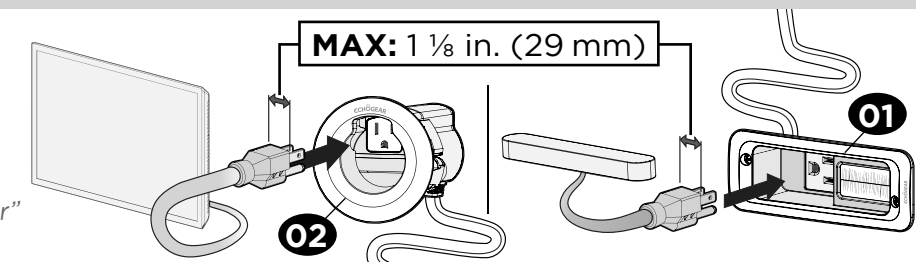
**NOTE:** Walls with blown-in type insulation may require removal of some insulation inside the cavity.

### VERIFY TV PLUG FIT

**BEFORE DRILLING ANY HOLES:**

Make sure your TV plug fits in the upper module **02** and your soundbar fits in soundbar module **01**.

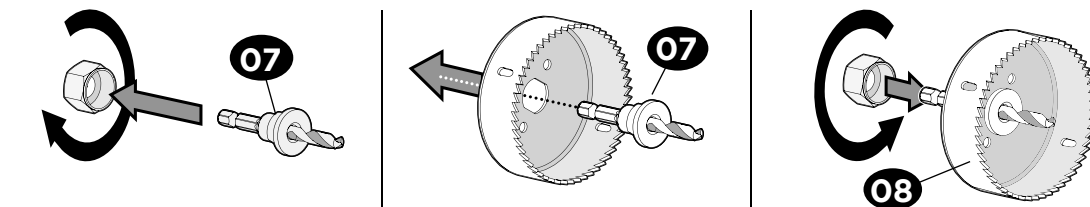
"size DOES matter"



## STEP 1

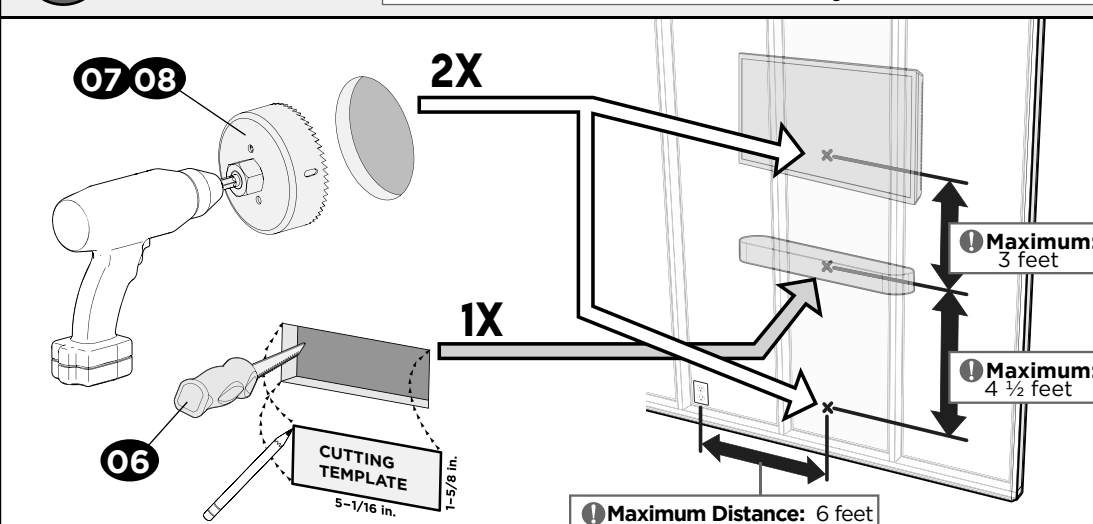
### MAKE SOME HOLES

#### A Assemble Hole Saw



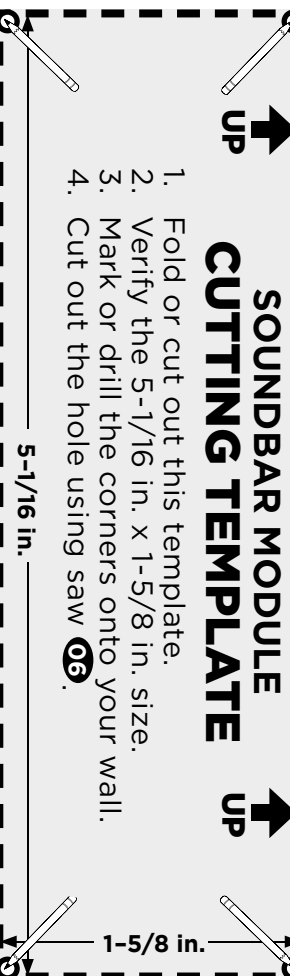
#### B Cut Holes

**TIP:** Drill the top hole **BEHIND** your TV and the soundbar hole **BEHIND** your soundbar.



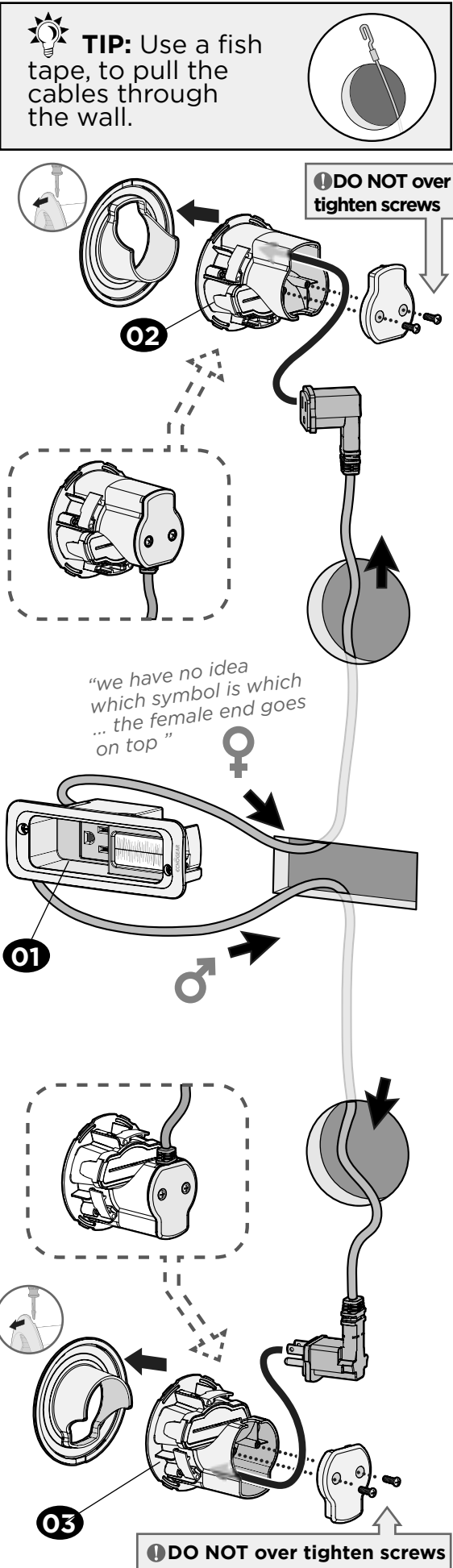
**SOUNDBAR MODULE CUTTING TEMPLATE**

1. Fold or cut out this template.
2. Verify the 5-1/16 in. x 1-5/8 in. size.
3. Mark or drill the corners onto your wall.
4. Cut out the hole using saw **06**.



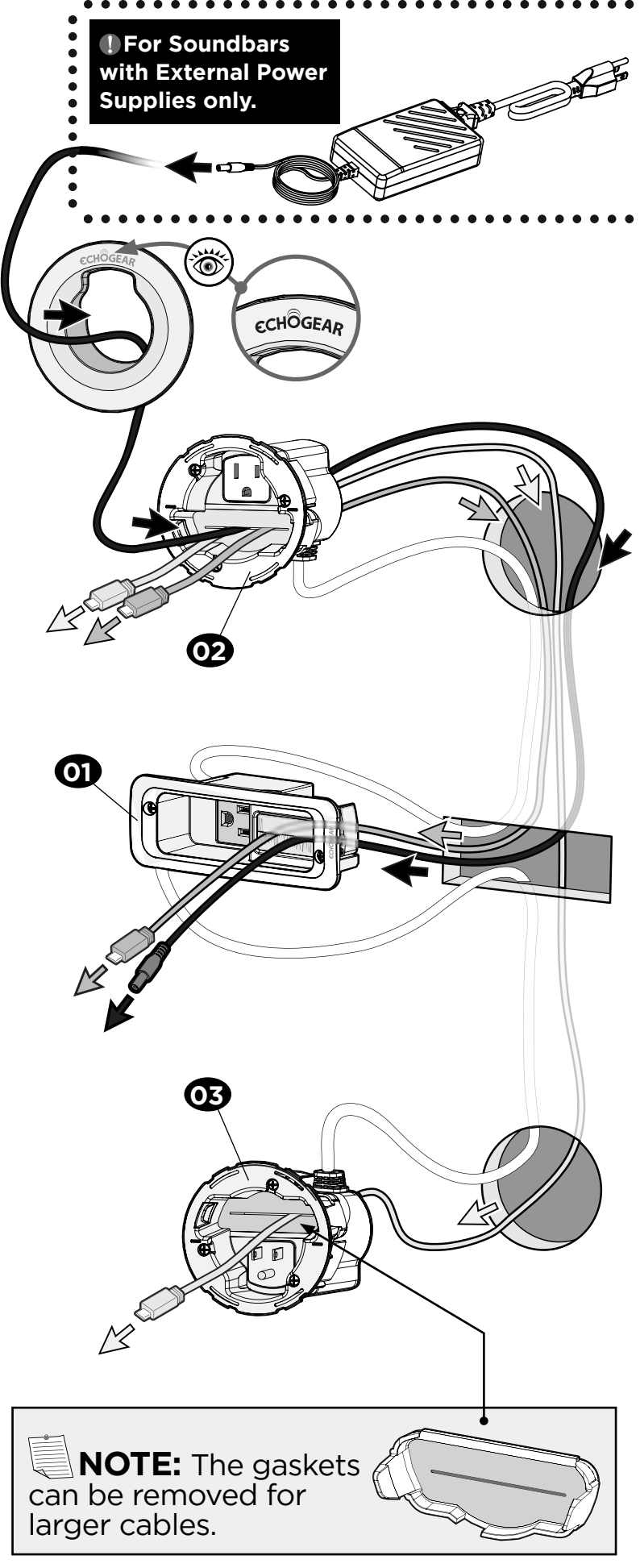
# STEP 2

## ROUTE POWER CORDS



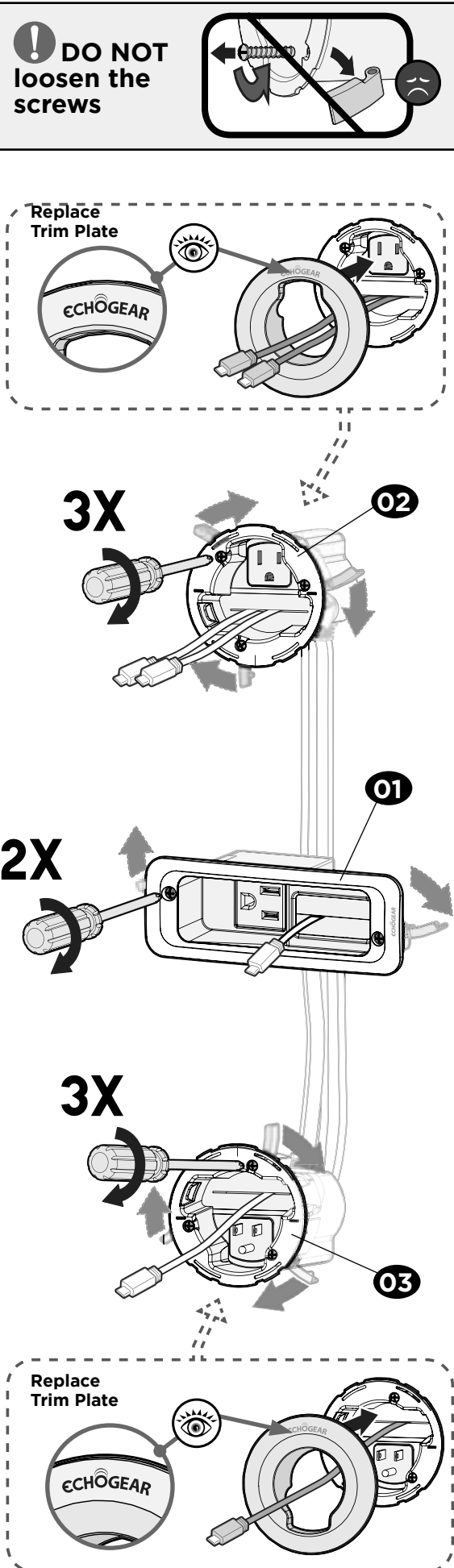
# STEP 3

## ROUTE LOW VOLTAGE CABLES



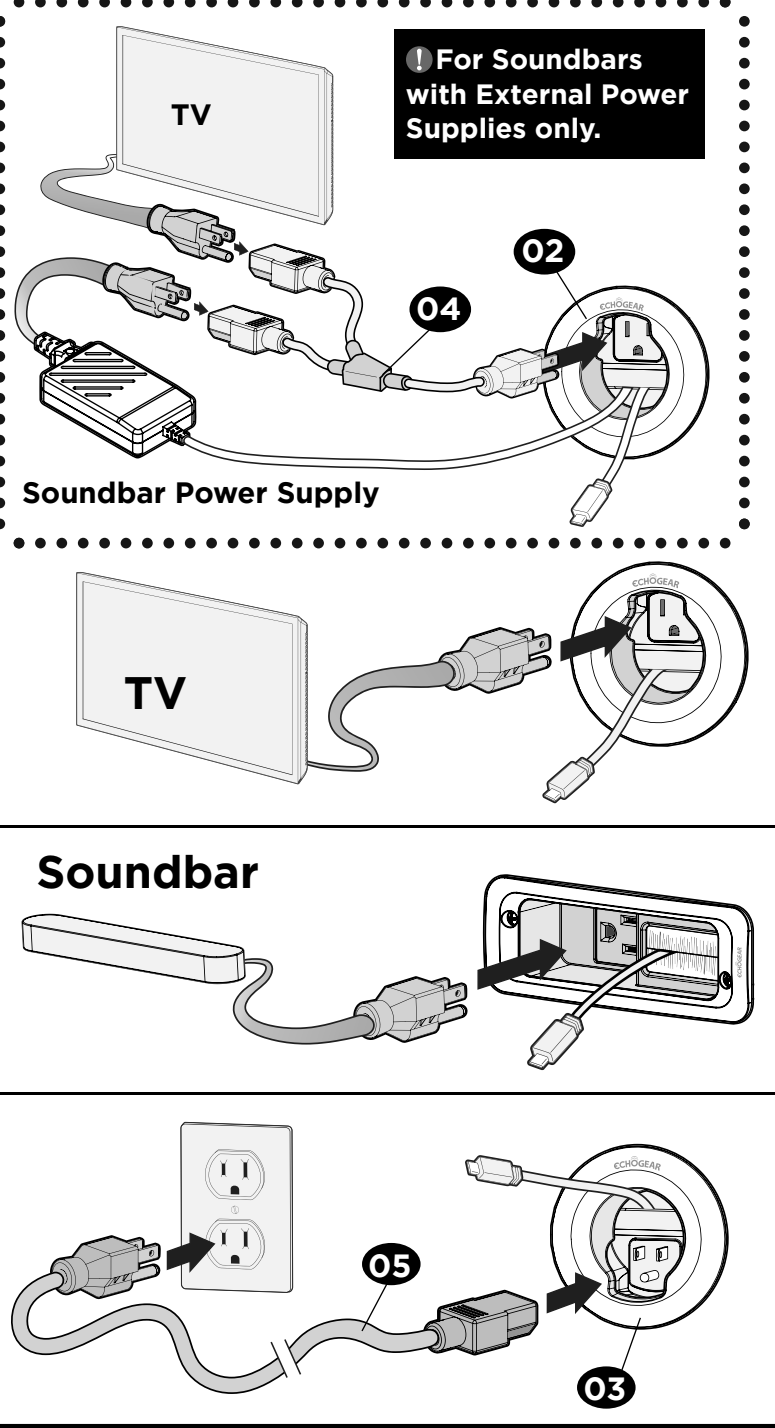
# STEP 4

## SECURE MODULES



# STEP 5

## POWER UP



## REMOVAL

